

ProLink



Interactive Setup & Support Guide

Version 1.6

[Start Setup](#)

< Back

Main Menu

1. [Before You Start](#)
2. [What's in the Box](#)
3. [Power & Charge](#)
4. [Use as a Set](#)
5. [Use Receiver With Phone](#)
6. [Advanced Features](#)
7. [Troubleshooting](#)
8. [Get Your Warranty](#)
9. [Rate This Guide](#)
10. [Need Human Help?](#)
11. [Share Your Feedback](#)

Next



1. Before You Start

Turn any AUX-out headphones into a low-latency LE Audio wireless gaming headset for PS5, PC & more.

- **Compatibility:** Works with 3.5mm or 2.5mm **AUX** headsets.
- **Microphone:** Supports both built-in and headset mics.
- **Voice Pickup:** Clip near mouth for best performance using the built-in mic.
- **Plug & play:** Already paired—just plug in or turn and go

< Back

Back to
Menu



2. What's in the Box



✓ Transmitter
DG60L



✓ Receiver
AS70P



✓ 2.5mm Adapter (for
Bose headphone, etc.)



✓ USB A to USB
C Adapter



✓ Type C Charging
cable



✓ 3.5mm AUX
Audio Cable

Next



3. Power & Charge

- Use USB-C (5V, 0.5~2A) cable to charge Receiver AS70P.
- Low battery: LED blinks **red** every 20s
- Charging: LED stays **red**
- Fully charged: LED off
- Playtime: Up to 16 hours

< Back

Back to
Menu



4. Use as a Set

4.1 Plug In the Adapter

- 1 Plug the transmitter into the USB port.
- 2 Or use the included adapter to plug it into a USB-C port.



Next

< Back

Back to
Menu



4. Use as a Set

4.2 Audio Sound Settings

Select your audio source:



PS5



Windows



Mac



4. Use as a Set

4.2 PS5's Sound Settings

Go to Setting → Sound,

- Microphone → Input Device → select "**Avantree DG60L**".
- Audio Output → Output Device → select "**Avantree DG60L**".



Users and Accounts



Family and Parental Controls



System



Storage



Sound



General Video

Next



4. Use as a Set

4.2 PC's Sound Settings

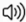
Go to Setting → Sound,

- Output → Select "**Avantree DG60L**".
- Input → Select "**Avantree DG60L**".

Note: For apps (e.g., Zoom, Teams), set **DG60L** as both input and output device in sound settings.

System > Sound

Output

 Choose where to play sound
Apps might have their own settings

Speakers
2- Avantree DG60L
Default device 

Speaker
Realtek(R) Audio
Enabled

Next

< Back

Back to
Menu



4. Use as a Set

4.2 Mac's Sound Settings

Go to Setting → Sound,

- Output → Select "**Avantree DG60L**".
- Input → Select "**Avantree DG60L**".

Note: For apps (e.g., Zoom, Teams), set **DG60L** as both input and output device in sound settings.



Next



4. Use as a Set

4.3 Connect Receiver

- 1 Slide the power switch to ● position.
- 2 Once connected, LEDs stay solid:
 - DG60L: Solid **blue** (Gaming Mode) or solid **white** (Music Mode)
 - AS70P: Solid **white**



< Back

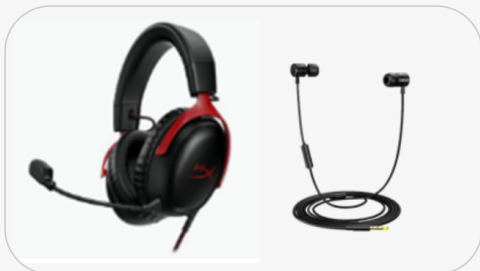
Back to
Menu



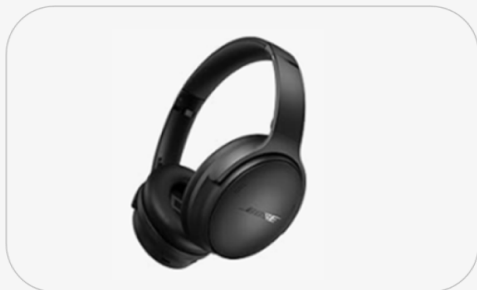
4. Use as a Set

4.4 Plug in Headphones

Select your headphone type:



For Wired Headphones
with microphone



For headphones with AUX port

< Back

Back to
Menu



4. Use as a Set

4.4 Plug in Headphones

For wired headphones with microphone:

Plug directly into the AS70P 3.5mm port, using the **headphones' microphone.**



Next



4. Use as a Set

4.4 Plug in Headphones

For headphones with AUX port:

- 1 Connect to the AS70P 3.5mm port using the **included AUX cable**.
- 2 Uses AS70P's microphone. Keep **mic facing up** for optimal sound pickup.



Note: For 2.5mm headphones (e.g., Bose), use the included adapter.

< Back

Back to
Menu



4. Use as a Set

4.5 Reconnect Tips


- Turn off the devices.
- Auto-connects after turning on. If not, press the **MFB** on DG60L once to reconnect.

Next



5. Use Receiver With Phone

5.1 Enter Pairing Mode

- 1 Unplug** the transmitter or keep the connected audio source (eg., PC, PS5) **power off**.
- 2** Slide the power switch to  position and hold 2s → LED blinks **red & blue**.





5. Use Receiver With Phone

5.2 Connect to Phone / Tablet

- 1 Turn on Bluetooth, and select "**Avantree AS70P**".
- 2 The AS70P's LED will turn solid.



Make sure the device you want to connect to is in pairing mode. Your phone (巴拉的 S24) is currently visible to nearby devices.


Available devices

-  Avantree AS70P
-  Avantalk Infinity NC
-  Avantalk Infinity NC 1
-  Avantalk Infinity NC 1
-  AIMA-3D2E5A



5. Use Receiver With Phone

5.3 Reconnect Tips


- Auto-connects to last device after turning on. If not, push power switch to  once.
- Not reconnecting? Manually Select **AS70P** from your Bluetooth list.

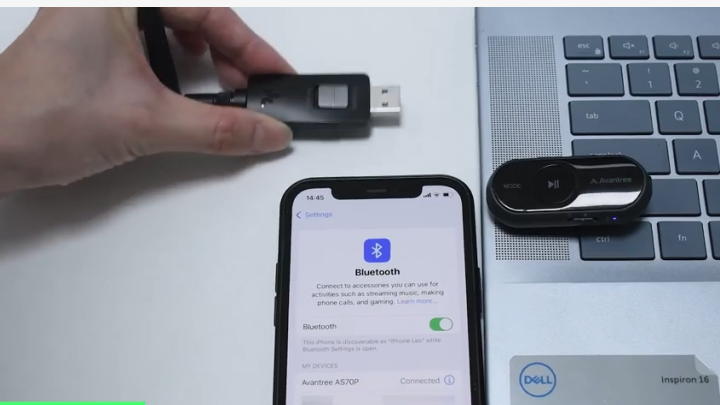


6. Advanced Features

6.1 AS70P Dual Link

- 1 Connect AS70P to phone.
- 2 Plug in the transmitter and wait 2s. When connected, LED stay **blue** or **white**.

Note: Dual Link ensures you won't miss calls. Press  to answer, hold to reject. Not for music switch.



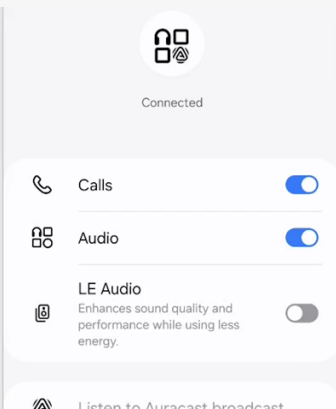


6. Advanced Features

6.2 Use AS70P With LE Device

Recommended for use with Android phones (e.g., Samsung S24).

- 1 Ensure AS70P is connected to your phone.
- 2 Tap gear icon, then turn on LE Audio.



< Back

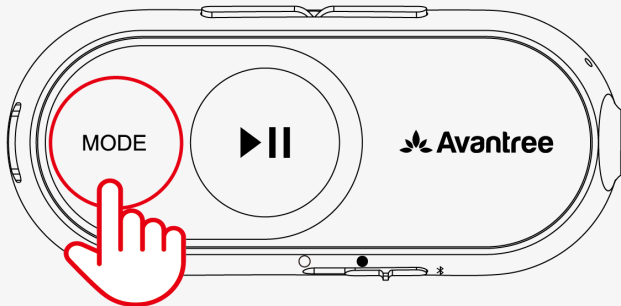
Back to
Menu



6. Advanced Features

6.3 Switch Sound Modes

Press the **Mode switch** on AS70P to switch between Balance and Bass sound modes.



Next



6. Advanced Features

6.4 Reset the Adapter

- 1 Press & hold the **MFB** for 5s until the LED blinks **red** & **blue**.
- 2 Double-press the MFB.

This will clear pairing history and enter pairing mode.





6. Advanced Features

6.5 Reset the Receiver

- 1 Turn on the AS70P.
- 2 Press and hold '+' & '-' until LED stays solid red & blue for 2s (looks pink).

This will clear pairing history and enter pairing mode.

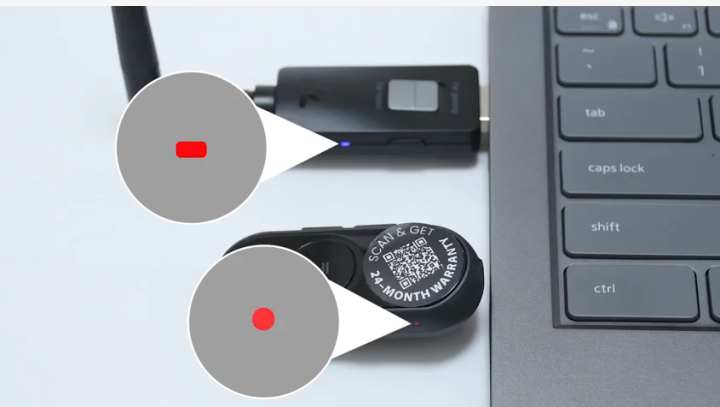




6. Advanced Features

6.6 Re-Pair the Devices

- 1 Once reset, both are in pairing mode.
- 2 Keep them close and wait.
- 3 Once connected, LEDs stay solid:
 - DG60L: Solid **blue** or solid **white**
 - AS70P: Solid **white**





7. Troubleshooting

No Sound?

- Confirm both units connected (LED solid).
- Check output/input device selection.

Connection Issues?

- Restart DG60L and AS70P if no auto connection.
- Still no connection? Manually pair.
- Still not working? Reset both devices and re-pair.

[More Troubleshooting & FAQ](#) ↗

< Back

Back to
Menu



8. Get Your Warranty

[Register now to:](#)

- Get **24-month** warranty-FREE!
- Enjoy priority support.

Next

< Back

Back to
Menu



9. Rate This Guide

Thanks for choosing ProLink!

Was this guide helpful?

Tap a face below—it only takes 1 second:



Next

< Back

Back to
Menu



10. Need Human Help?

Get a reply within **1 business day**.

Choose a support option:

 Email: support@avantree.com

 [Schedule callback ↗](#)

 [Submit a ticket ↗](#)

 [Live chat ↗](#)

Next

< Back

Back to
Menu



11. Share Your Feedback

We've supported hearing-impaired customers for **20+** years.

Did we help you? Leave a quick review on Amazon to support us!

Select your store:

 Amazon US

 Amazon UK

 Amazon CA

 Amazon AU