



# AuraLink

## Bluetooth Auracast Audio Receiver



## Interactive User Guide

Version 1.9.4

Start Setup

< Back



# Main Menu

1. Product Overview

2. Power & Charge

3. Auracast Mode

A. Join an Open Broadcast

(Android Phones/Avantree Transmitters...)

B. Join a Secured Broadcast

4. Bluetooth Mode

5. FAQ & Troubleshooting

6. Rate This Guide

7. Get Help & Updates

Next



# 1. Product Overview

AuraLink is an audio receiver. It allows you to:

- Turn your wired speakers into wireless ones.
- Receive Auracast™ broadcasts.
- Receive audio via Bluetooth.

[Next](#)

Was this helpful?





## 2. Power & Charge

- Use USB-C (5V, 1~2.4A).
- Low battery: LED blinks **red**
- Charging: LED stays **solid red**
- Fully charged: LED turns off (~2 hrs)
- Playtime: Up to 20 hrs
- Working while charging

[Next](#)

Was this helpful?





## 3. Auracast Mode

Choose how you want to join:

### A

#### Join an Open Broadcast

→ Auto-search and connect directly  
(No code or app needed)

### B

#### Join a Secured Broadcast



→ Connect via Android Auracast Assistant  
(For encrypted broadcasts that require authentication)


Was this helpful?



## A.1 Join an Open Broadcast

AuraLink can **automatically join public** Auracast broadcasts.

- 1 Slide power switch to "**ON**"  
→ LED  blinks **orange**  
→ **auto-searches** for broadcasts.
- 2 **Connected:** LED  turns solid **orange**.

 Supported Auracast Broadcasting Devices:

 [Auracast-enabled Android phones](#) ↗

 [Avantree Auracast transmitters](#) ↗

 [Check more](#) ↗


Next

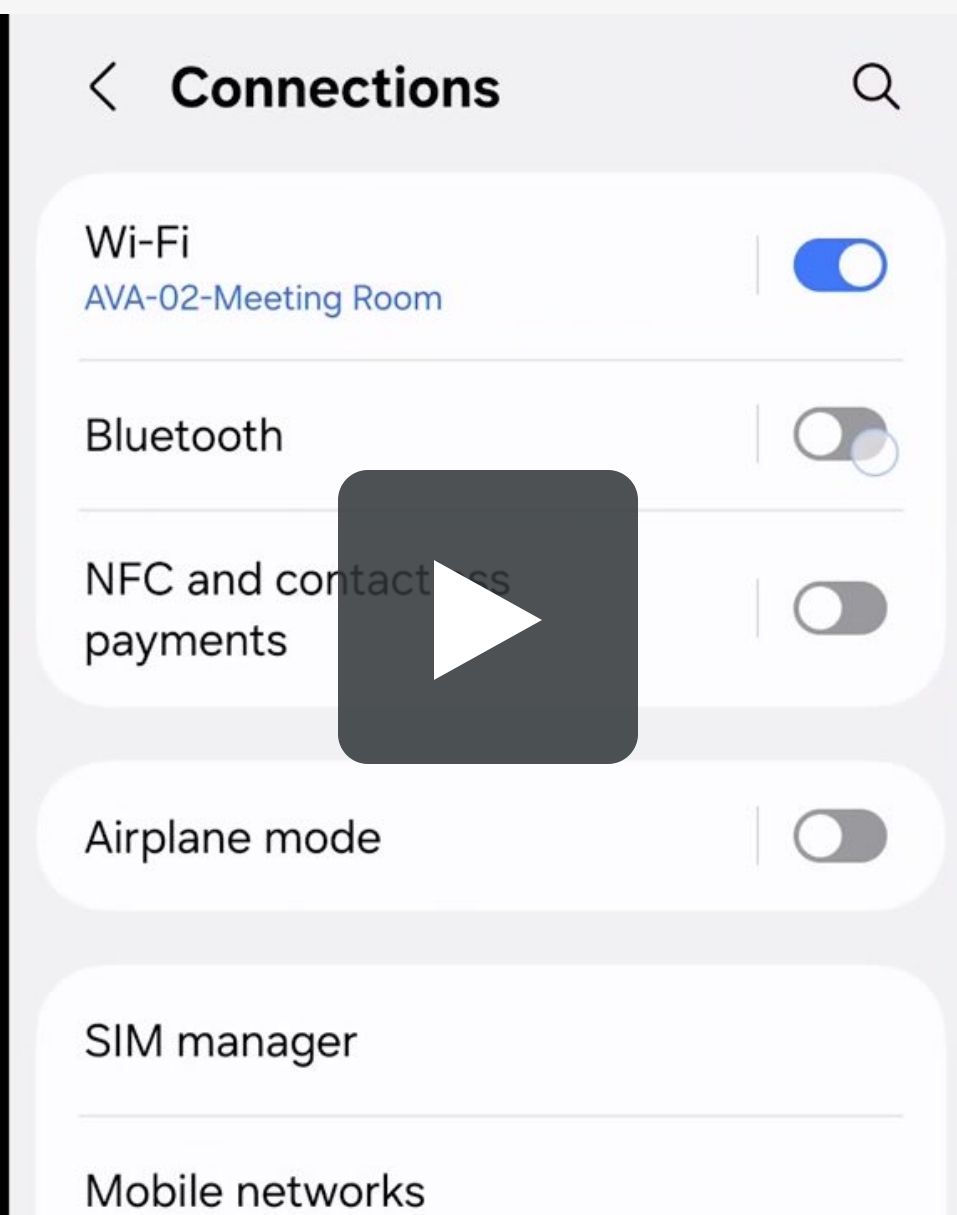
Was this helpful?



# Turn on Auracast on Phone

- 1 Open **Bluetooth Settings** on Phone
- 2 Select "**Broadcast sound using Auracast**"

 Auracast menu locations vary by phone model.



## Common supported models:

- Google Pixel 8 / 9 series
- Samsung Galaxy S23 / S24 series

 [Auracast-enable Phone Checker](#) 

Next

Was this helpful?



< Back

Menu

# Turn on Auracast on Avantree Transmitter

**1** Power on transmitter.

**2** Put it into Auracast mode.

**!** Please refer to the transmitter's user guide for model-specific instructions.

## Supported Avantree Auracast Transmitters:



Oasis Aura



Audikast



Voyager



C82 Aura

Next

Was this helpful?





## A.2 Plug in Speaker

- ➊ Plug AuraLink into your speaker.
- ➋ Play audio and enjoy.
- ➌ **Adjust volume** through:
  - Audio source (TV / phone / PC)
  - Transmitter (e.g. Audikast 4)
  - The speaker's own volume control

[👉 Join a Secured Broadcast ↗](#)

Next

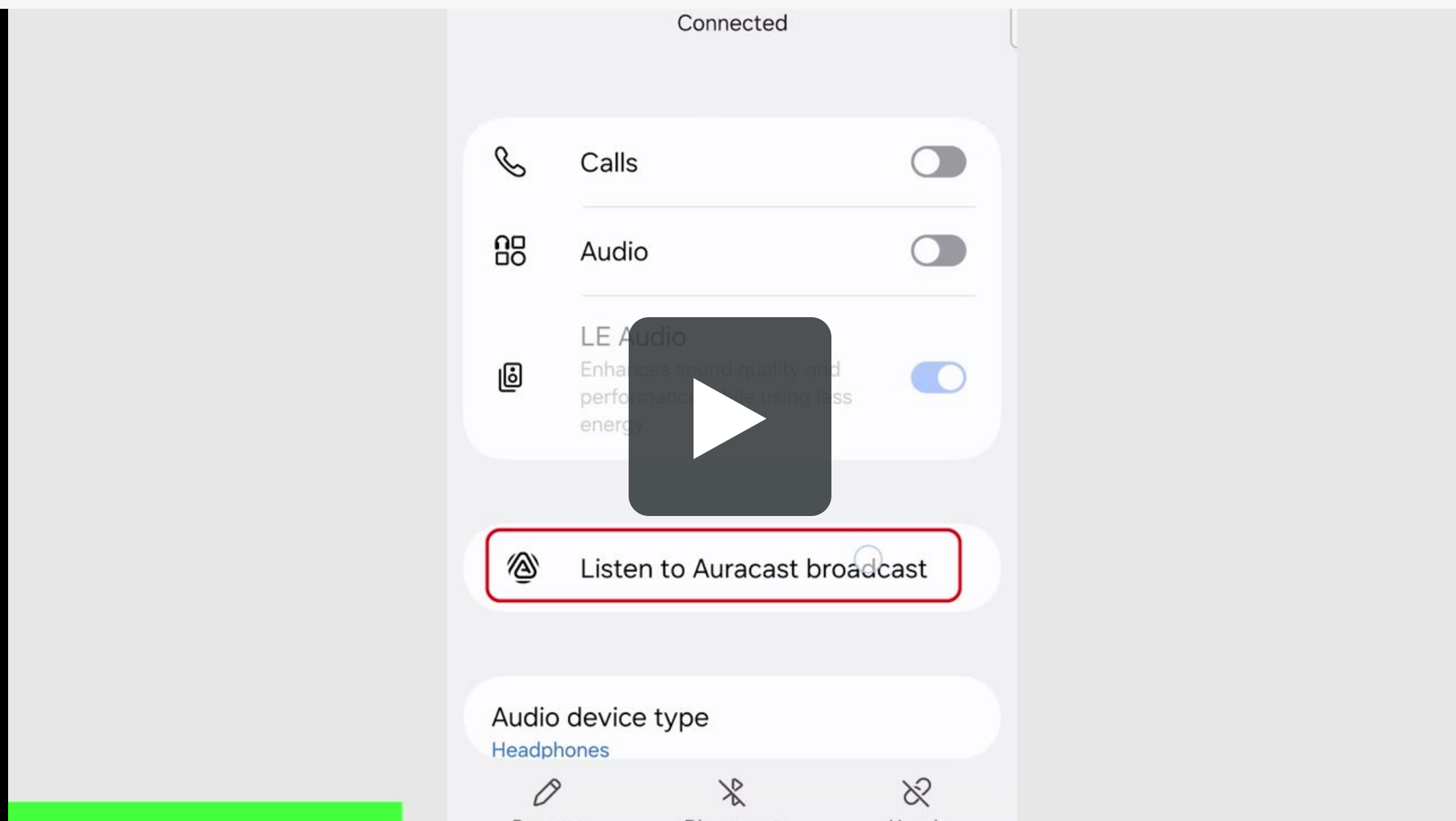
Was this helpful?



## B.1 Join a Secured Broadcast

[👉 Find a phone with Auracast Assistant support.](#) (e.g. Samsung S23+, Pixel 8/9)

- 1 Pair AuraLink with phone via bluetooth.
- 2 Turn on LE Audio on Phone  
→ tap **Listen to Auracast broadcast**  
→ **Choose** broadcast want to join.
- 3 Enter the broadcast source password



Next

Was this helpful?



## B.2 Plug in Speaker

- ➊ Plug AuraLink into your speaker.
- ➋ Play audio and enjoy.
- ➌ **Adjust volume** through:
  - Audio source (TV / phone / PC)
  - Transmitter (e.g. Audikast 4)
  - The speaker's own volume control

 [Join an Open Broadcast](#) ↗

Next

Was this helpful?



## 4. Bluetooth Mode

- **Universal Compatibility**  
Works with **any Bluetooth device**: phones, tablets, TVs, or computers.
- **Best Latency Performance**  
Use transmitters supporting **aptX Adaptive** for smooth high-quality, and perfectly synced sound.



 [View compatible aptX Adaptive devices](#) ↗

Next

Was this helpful?



## 4.1 Pair with Bluetooth Device

- 1 Slide power switch to "ON"  
LED  blinks **red** & **blue** → Ready to pair.
  - 2 On your phone or transmitter, select "Avantree AuraLink."
- Connected: LED  turns **solid**.



**If not blinking red & blue,**  
press and hold the main button.

Next

Was this helpful?



## 4.2 Plug in Speaker

- ➊ Plug AuraLink into your speaker.
- ➋ Play audio.
- ➌ **Adjust volume** through:
  - Audio source (TV / phone / PC)
  - Transmitter (e.g. Audikast 4)
  - The speaker's own volume control

Next

Was this helpful?



< Back



Menu

## 5. FAQ & Troubleshooting

- [Can't pair/Connect? ↗](#)
- [How do I reset /clear pairing history? ↗](#)

 [More FAQ & Troubleshooting ↗](#)

Next

Was this helpful?



< Back



Menu

## 6. Rate This Guide

**Thanks for choosing AuraLink!**

**Was this guide helpful?**

Tap a face—just 1 second:



Next

< Back



Menu

# 7. Get Help & Updates

## 1. Register Your Product

Extended warranty & get updates.

[Register Your Product](#)

## 2. Agent Support

Need help? Contact our agents.



Email



Call



Chat